

Converting ER Diagram to Table

Here are some steps to convert an ER diagram to tables in a database management system (DBMS):

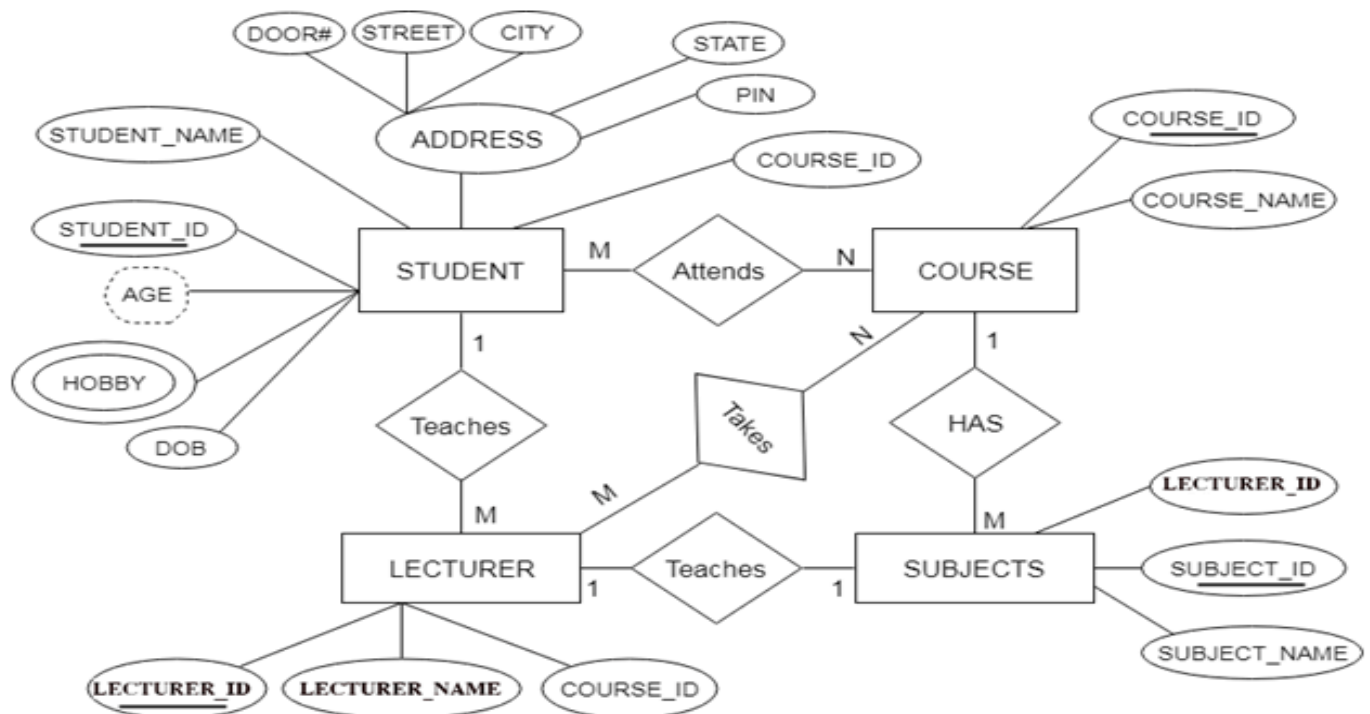
1. Analyze the entities: Identify each entity in the diagram, represented by a rectangle.
2. Create separate tables for each entity: Each table should have the same name as the entity. For each attribute, create a column in the table.
3. Map relationships: For one-to-many relationships, add a foreign key in the "many" table that references the "one" table's primary key.
4. Normalize the tables
5. Verify and refine

Reduction of ER diagram to Table

The database can be represented using the notations, and these notations can be reduced to a collection of tables.

In the database, every entity set or relationship set can be represented in tabular form.

The ER diagram is given below:



There are some points for converting the ER diagram to the table:

- **Entity type becomes a table.**

In the given ER diagram, LECTURE, STUDENT, SUBJECT and COURSE forms individual tables.

- **All single-valued attribute becomes a column for the table.**

In the STUDENT entity, STUDENT_NAME and STUDENT_ID form the column of STUDENT table. Similarly, COURSE_NAME and COURSE_ID form the column of COURSE table and so on.

- **A key attribute of the entity type represented by the primary key.**

In the given ER diagram, COURSE_ID, STUDENT_ID, SUBJECT_ID, and LECTURE_ID are the key attribute of the entity.

- **The multivalued attribute is represented by a separate table.**

In the student table, a hobby is a multivalued attribute. So it is not possible to represent multiple values in a single column of STUDENT table. Hence we create a table STUD_HOBBY with column name STUDENT_ID and HOBBY. Using both the column, we create a composite key.

- **Composite attribute represented by components.**

In the given ER diagram, student address is a composite attribute. It contains CITY, PIN, DOOR#, STREET, and STATE. In the STUDENT table, these attributes can merge as an individual column.

- **Derived attributes are not considered in the table.**

In the STUDENT table, Age is the derived attribute. It can be calculated at any point of time by calculating the difference between current date and Date of Birth.

Using these rules, you can convert the ER diagram to tables and columns and assign the mapping between the tables. Table structure for the given ER diagram is as below:

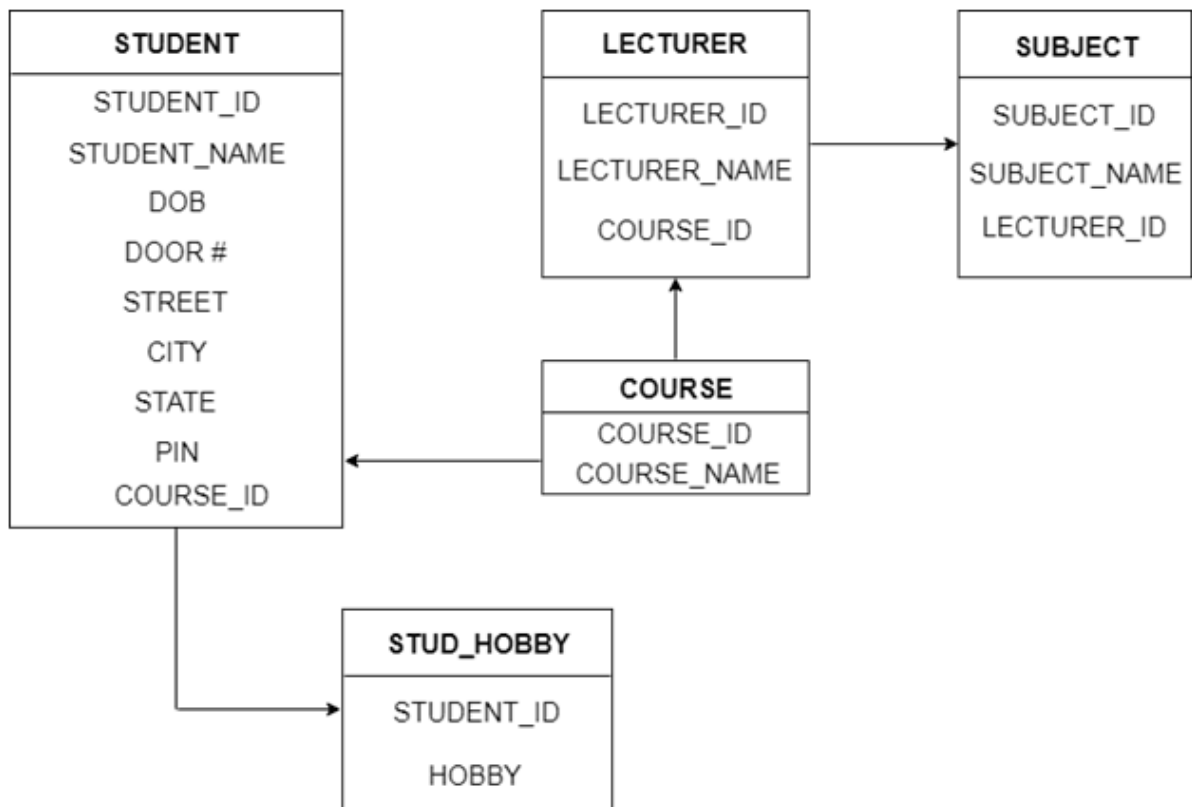


Figure: Table structure